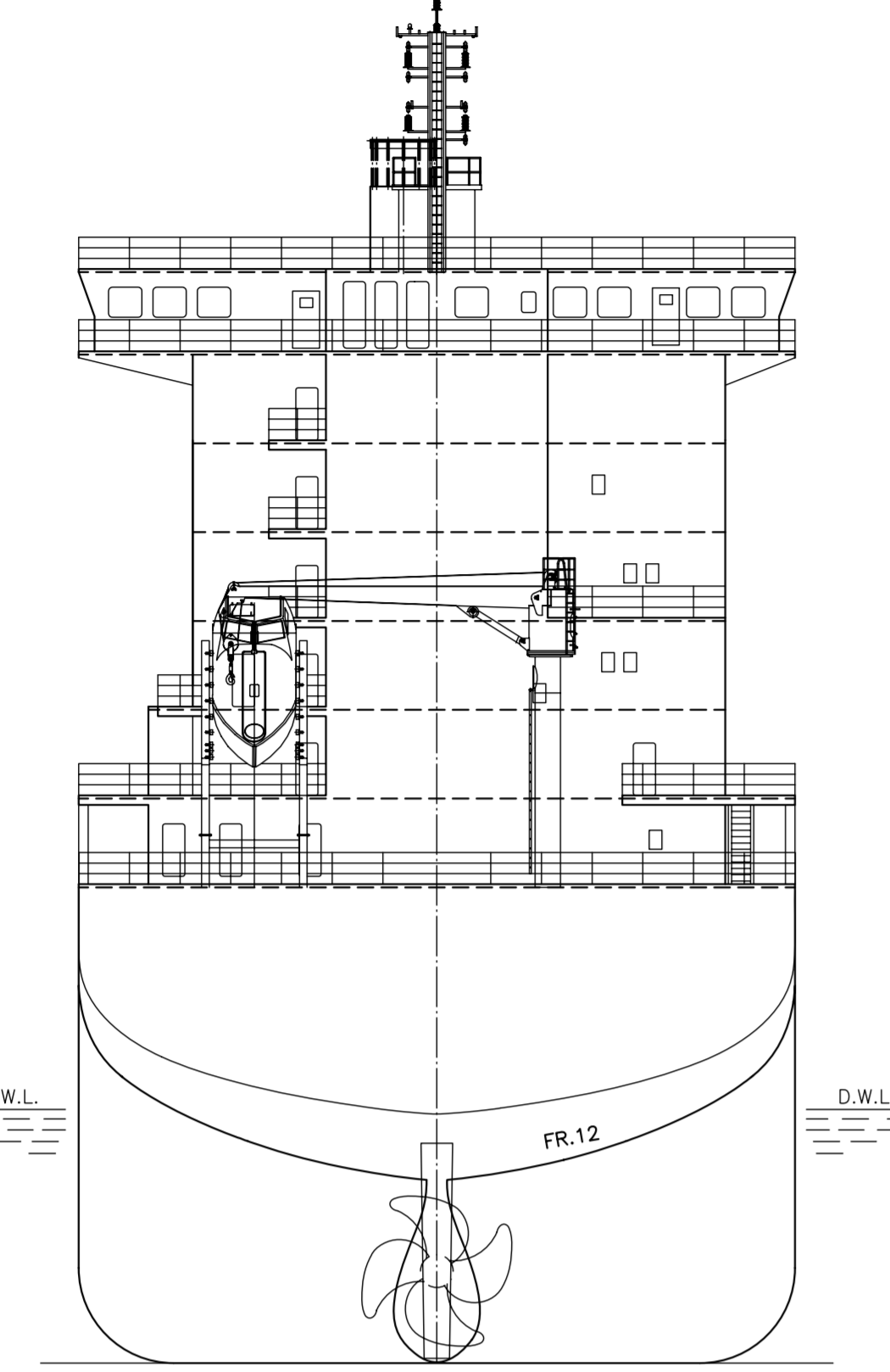
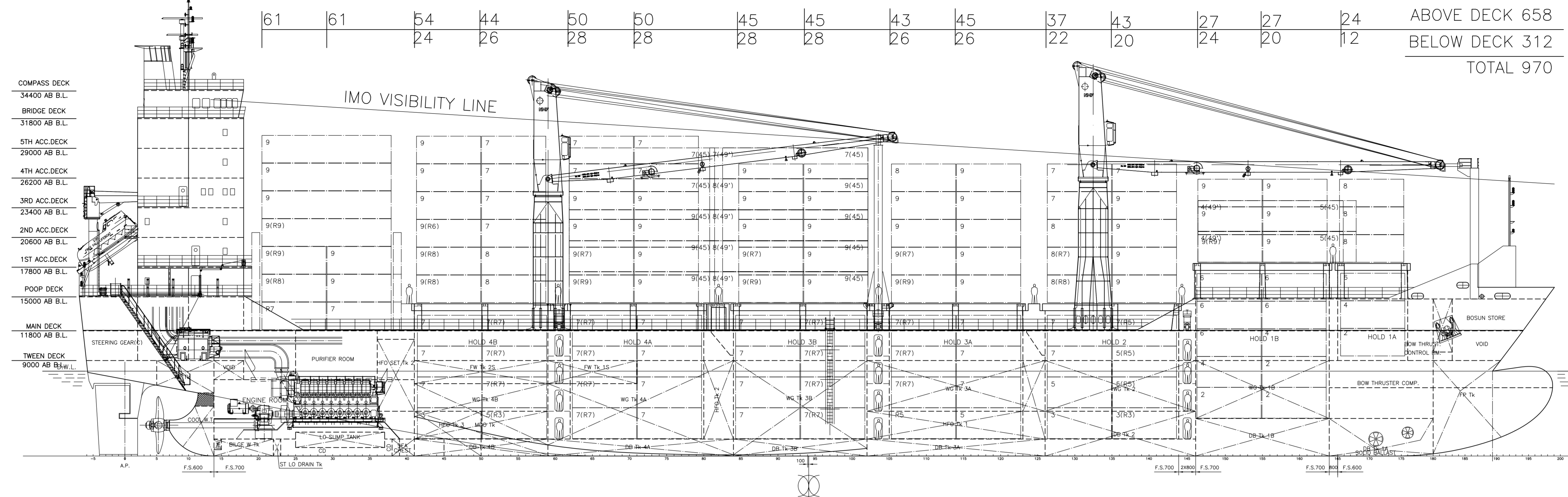
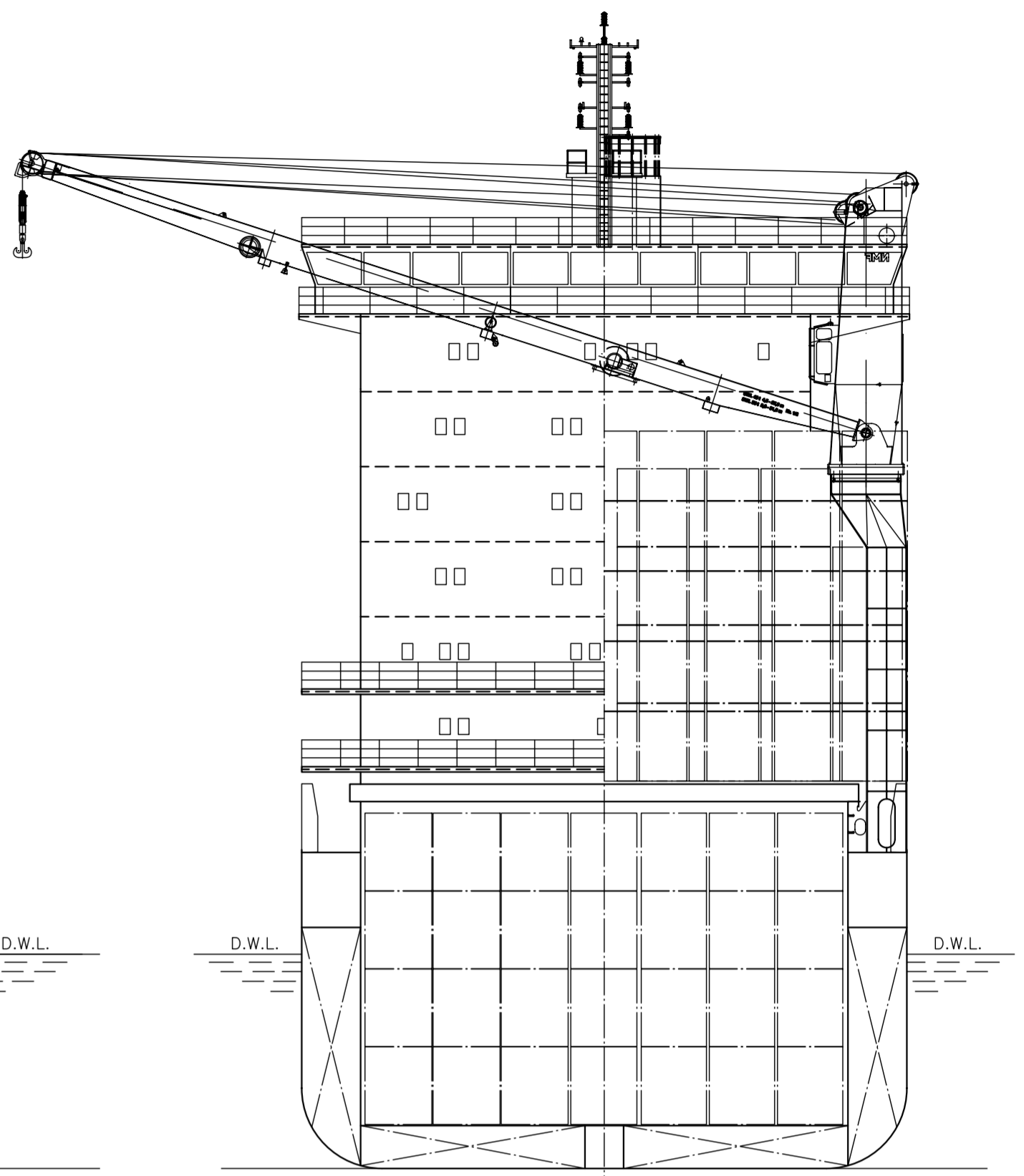


VIEW FROM AFT

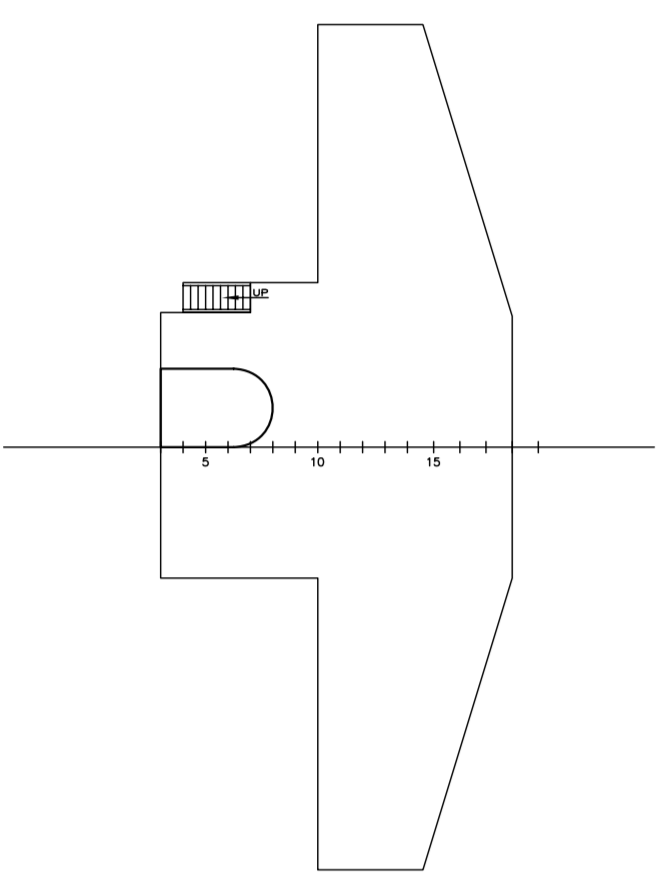


VIEW FROM FORE

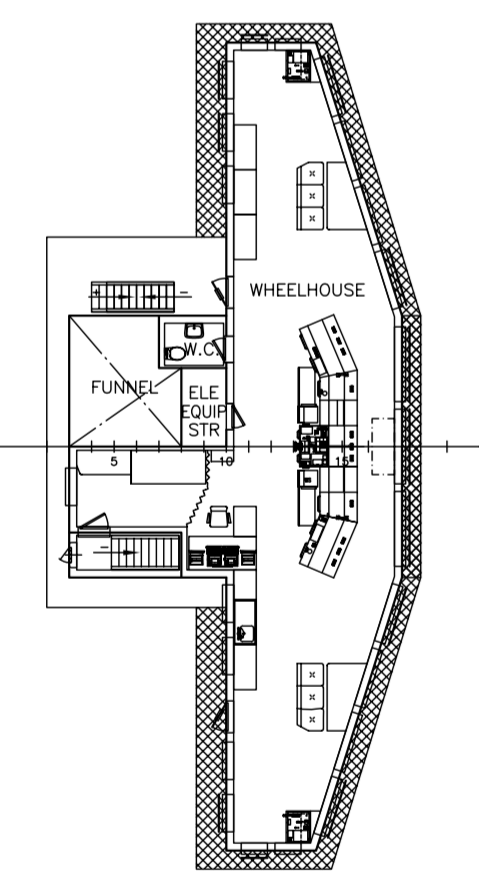


ABOVE DECK 658  
BELOW DECK 312  
TOTAL 970

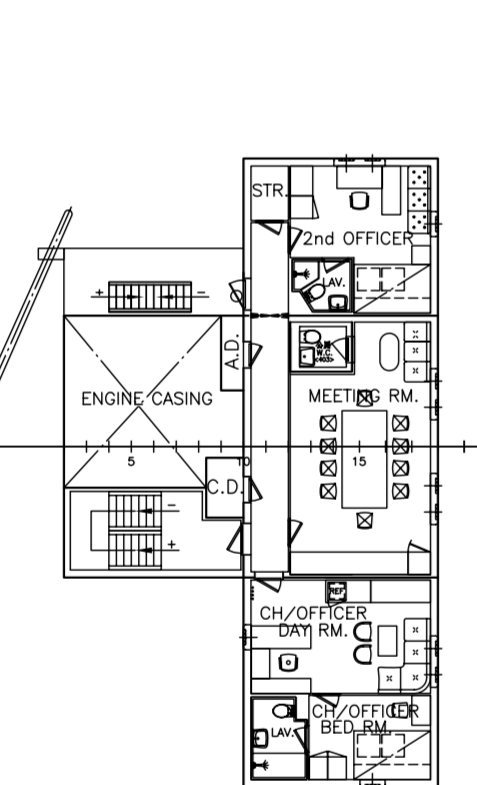
COMPASS DECK



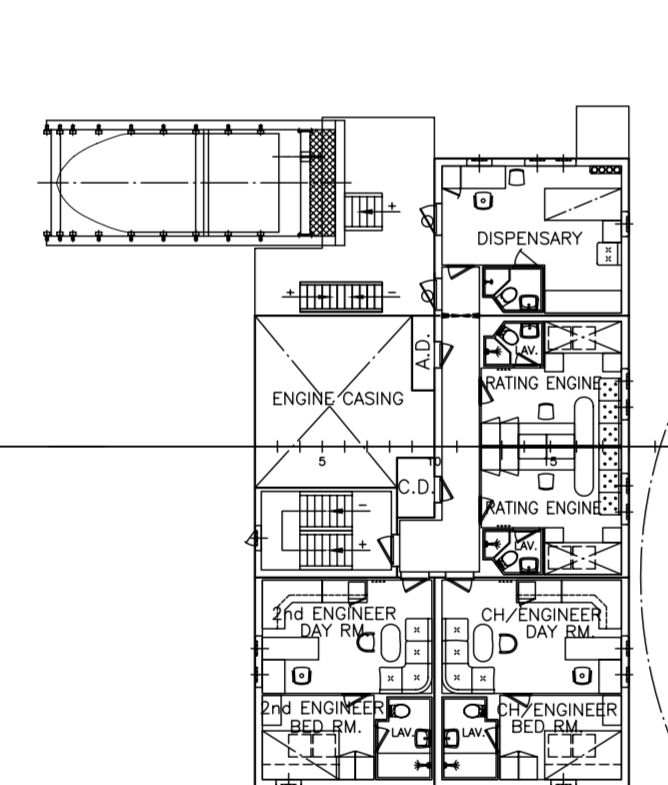
BRIDGE DECK



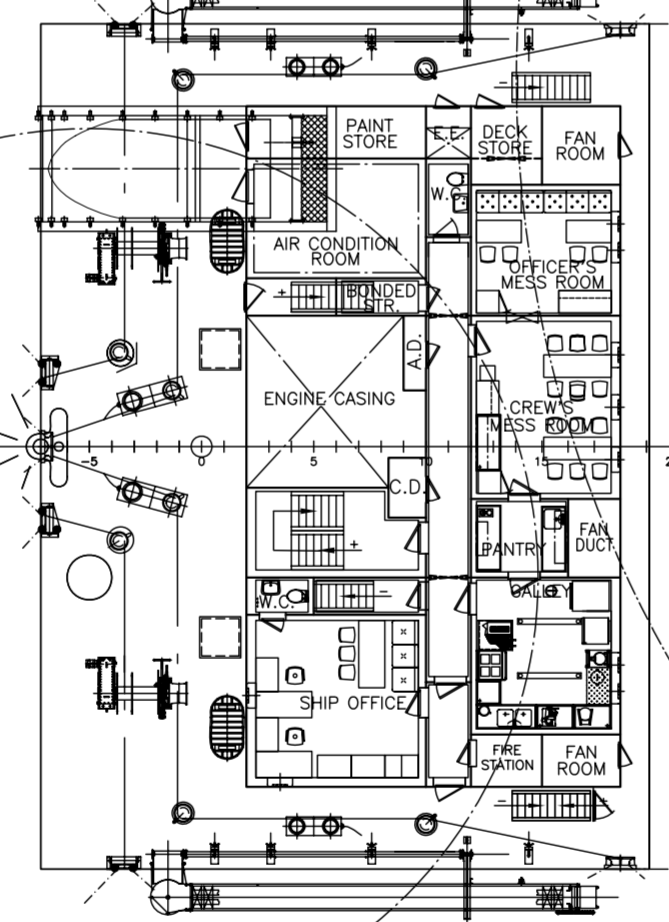
4TH ACC. DECK



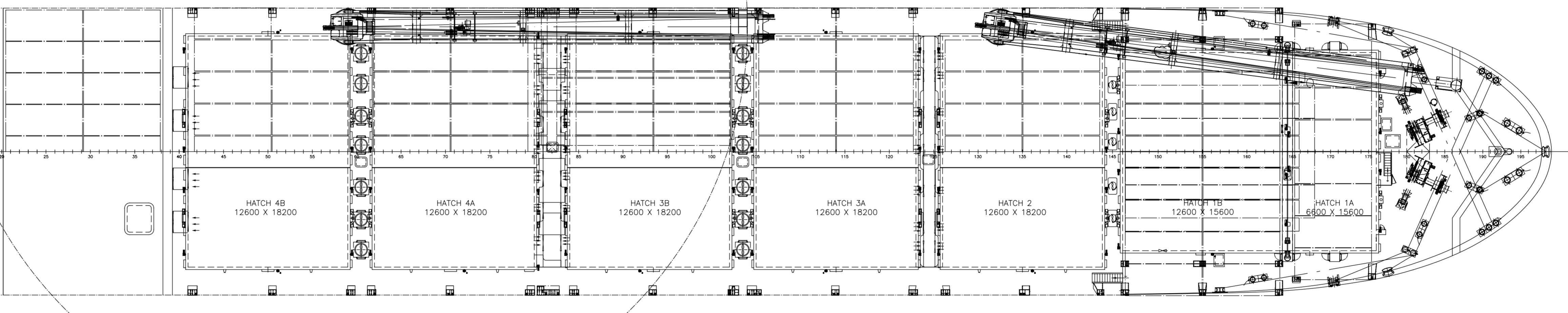
2ND ACC. DECK



POOP DECK



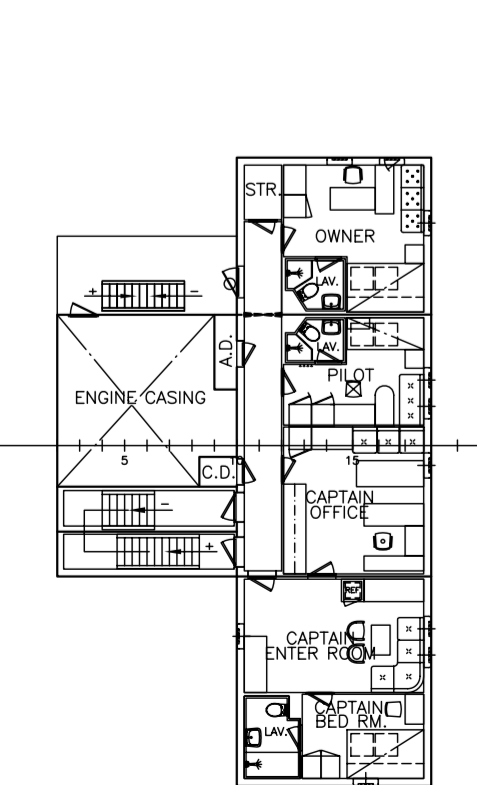
FORECASTLE



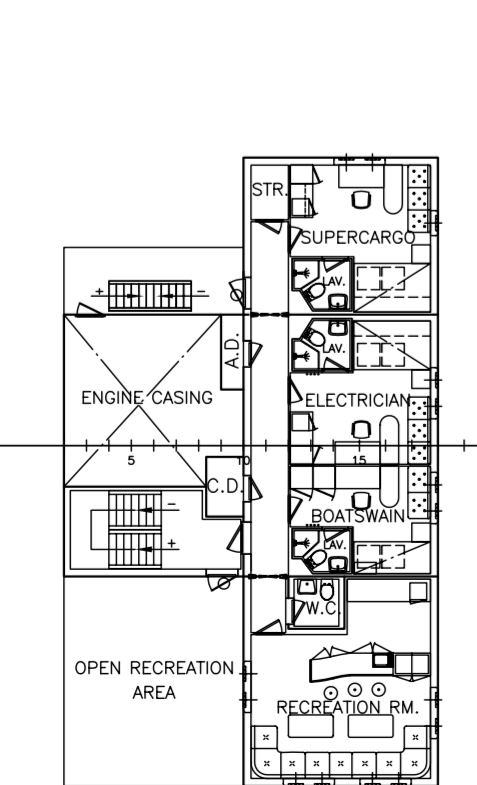
PRINCIPAL PARTICULARS

LENGTH O.A.	abt. 139.10 m
LENGTH B.P.	129.00 m
BREADTH MLD.	22.60 m
DEPTH MLD.	11.80 m
DRAFT DESIGN/SCANTLING	8.00/8.80 m
DEADWEIGHT (DESIGN/SCANTLING)	abt. 9600 /11500 m.t.
CONTAINER CAPACITY (TOTAL/DECK/HOLD)	970/658/312TEU
MAIN ENGINE	MAN-B&W 8L48/60B
M. C. R.	9600 kW at 500 r/min
COMPLEMENT	15 P.
SERVICE SPEED (design draft/90% MCR, 15% sea margin)	abt. 18.0 knots
CLASS:	GL +100 A5 E CONTAINER SHIP, SOLAS II-2, REG. 19 DANGEROUS GOODS +MC AUT NAV-O

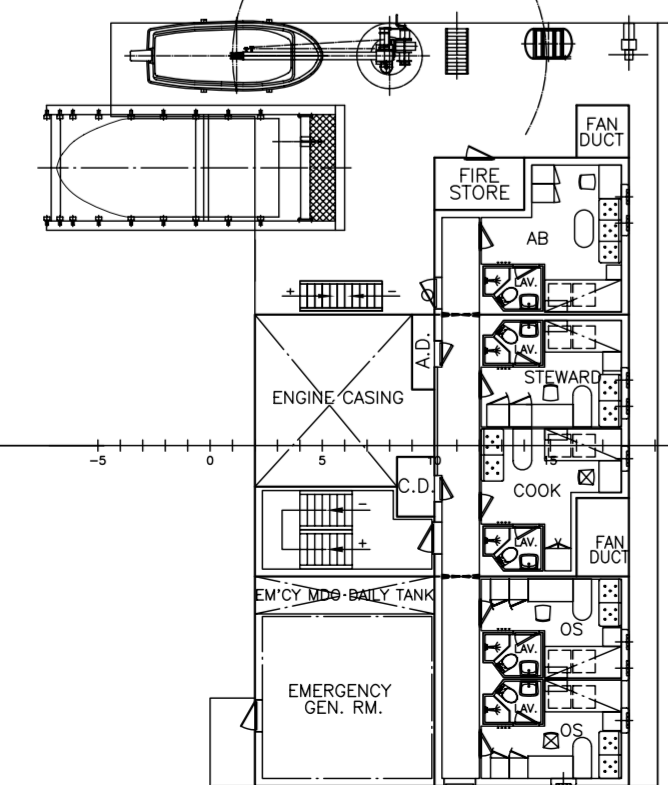
5TH ACC. DECK



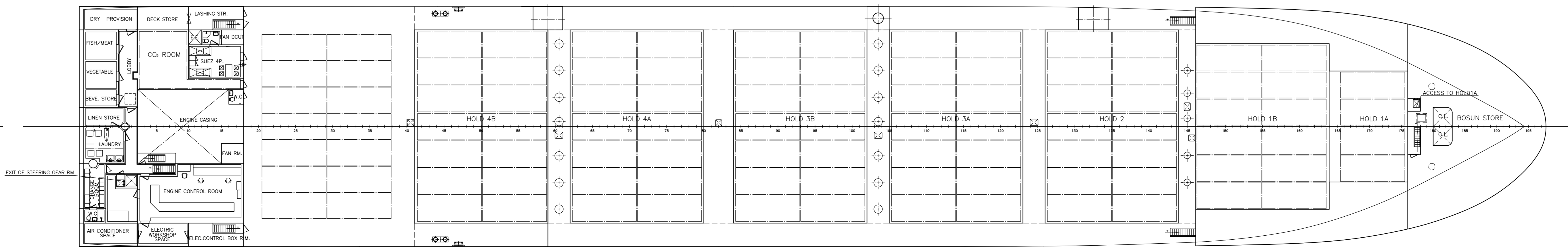
3RD ACC. DECK



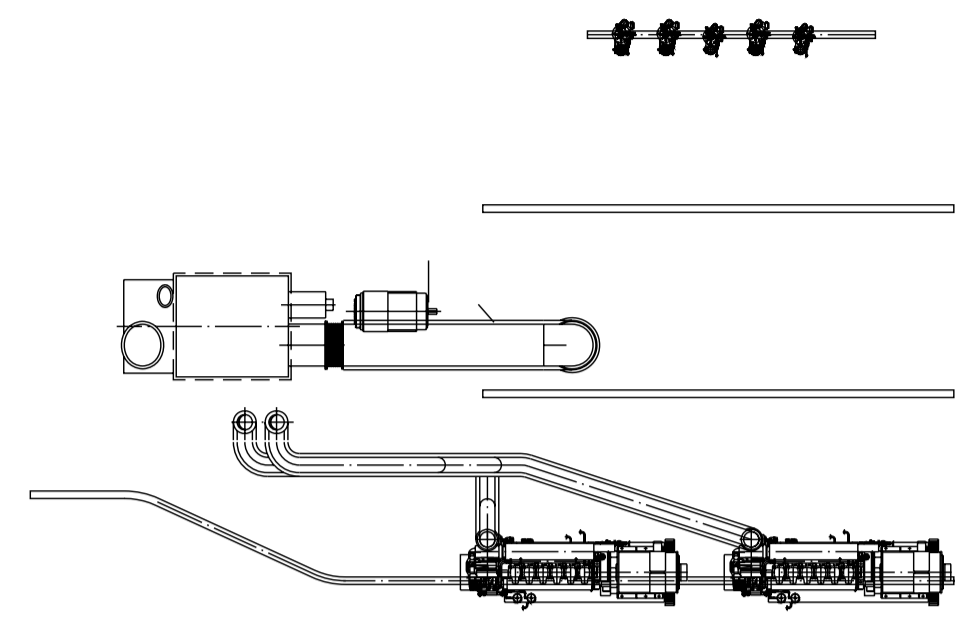
1ST ACC. DECK



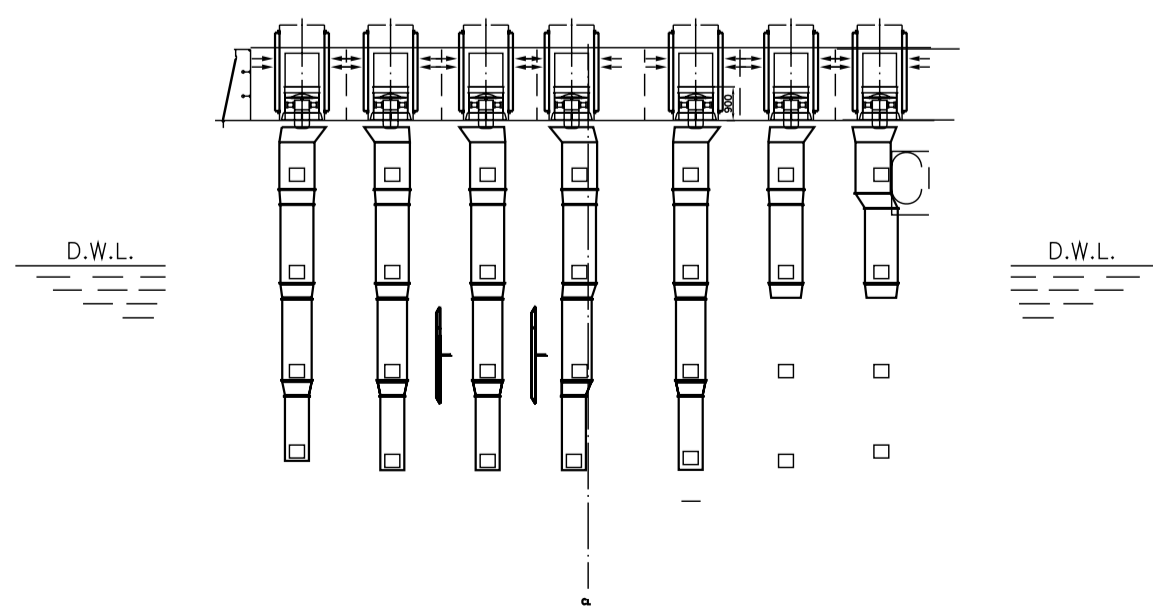
MAIN DECK



BUILDER	ZHEJIANG YANGFAN SHIP GROUP	SHIP'S No.	
DESIGNER	MARINE DESIGN & RESEARCH INSTITUTE OF CHINA		
	900TEU CONTAINER VESSEL	完工图纸	G-1
	GENERAL ARRANGEMENT	Q82.24035.050.001	
	AS-BUILT DRAWING	1:200	
		共 2 页   第 1 页	
		MARIC	



FRAME 60,5 and 103,5  
MECHANICAL SUPPLY



FRAME 144  
MECHANICAL SUPPLY

